

Meet some of "the Locals" ...

Almost all photographs below were taken in the local area. All species have been observed locally.

Plants

Trees & Shrubs



Gold-Dust Wattle
(*Acacia cinerea*)
Shrub. Fls: Win-Spr



Golden Wattle
(*Acacia pycnantha*)
Tree. Win-Spr



Large Scurf Pea
(*Cullen australasicum*)
Shrub. Spr & Aut



River Red Gum
(*Euc. camaldulensis*)
Tree. Summer



Native Wisteria
(*Hardenbergia violacea*)
Twining shrub. Win-Spr



Rock Logania
(*Logania saxatilis*)
Shrub. Win-Spr

Ground Layer



Chocolate Lily
(*Athropodium strictum*)
'Bully'. Spring



Bulbine Lily
(*Bulbine bulbosa*)
Bulb. Win-Spr



Com. Everlasting
(*Chryscephalum spicatum*)
Knee-high. Spr-Aut



Old Man's Beard
(*Clematis microphylla*)
Scrambler. Summer



Aust. Bindweed
(*Convolvulus remotus*)
Twiner. Spr-Sum



Blue Flax Lily
(*Dianella revoluta*)
Clumps. Win-Spr



White Goodenia
(*Goodenia albiflora*)
Knee-high. Spring



Running Postman
(*Kennedia prostrata*)
G/cover. Win-Spr



Tall Bluebell
(*Wahlenbergia stricta*)
G/cover. Esp. Spring

Grasses



Wallaby Grass
(*Austrodanthonia fulva*)
Cool season growth



Windmill Grass
(*Chloris truncata*)
Warm season growth



Scented Grass
(*Cymbopogon ambiguus*)
Warm season growth



Kangaroo Grass
(*Themeda triandra*)
Mostly warm season

Plant Eaters

Animals / Birds



Koala
(*Phascolarctos cinereus*)
Eats gum leaves



Ringtail Possum
(*Pseudocheirus peregrinus*)
Eats lvs, fruit, flowers



White Cockatoo
(*Cacatua galerita*)
Eats seeds, fruit, fls



Honeyeaters
(e.g. *Phylidonyris* spp.)
Eats nectar, pollen



Rainbow Lorikeet
(*Triglossus haematocephalus*)
Eats nectar, fruit

Butterflies / caterpillars



Common Brown
(*Heteronympha oeneipe*)
Eats grasses; nectar



Meadow Argus
(*Junonia villata calybe*)
Eats gooderries; nectar



Chequered S/tail
(*Papilio demoleus*)
Eats scurf peas; nectar



Painted Lady
(*Vanessa kershawi*)
Eats daisies; nectar



Aust. Admral
(*Vanessa itea*)
Eats nettles; nectar



Common Blue
(*Zizina labradus*)
Eats peas; nectar

Little Critters



Bee, tiny green
(*Halictus* species)
Eats nectar, pollen



Bee, black on tily
(*Lasioglossum* species)
Eats nectar, pollen



Bush Cricket
(Order: Orthoptera)
Eats leaves, seeds



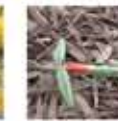
Christmas Beetle
(Order: Coleoptera)
Eats gum leaves



Hoverfly (adult)
(Order: Diptera)
Eats nectar, pollen



Moth caterpillar
(*Capua cuculliformis*)
Eats flowers, leaves



Stick insect
(Order: Phasmatodea)
Eats gum leaves



Wood/Swift Moth
(Order: Lepidoptera)
C/pillar eats gumroots

Animal Eaters

Birds



White Cockatoo
(*Cacatua galerita*)
(also) Grubs in wood



Kookaburra
(*Dacelo gigas*)
Eats small animals



Aust. Magpie
(*Gymnorhina tibicen*)
Small animals, insects



Boobook Owl
(*Ninox novaeseelandiae*)
Animals, incl. possums



Honeyeaters
(e.g. *Phylidonyris* spp.)
(also) Eats insects



Rainbow Lorikeet
(*Triglossus haematocephalus*)
(also) Eats insects

Animals



Eastern Banjo Frog
(*Limnodynastes dumerilii*)
Eats insects etc



Brown Tree Frog
(*Litoria zwieryi*)
Eats insects etc



Marbled Gecko
(*Christinus marmoratus*)
Eats mostly insects



Eastern Water Skink
(*Eulamprus quoyii*)
Litter critters, tadpoles



Garden Sunskink
(*Eumeces gilchristi*)
Eats litter critters etc



Blue-tongue Lizard
(*Tiliqua scincoides*)
Eats insects, snails etc

Little Critters



Ladybird Beetle
(Order: Coleoptera)
Eats aphids etc



2-spot Ladybird
(Order: Coleoptera)
Eats aphids etc



Hoverfly (larva)
(Order: Diptera)
Many eat aphids etc



Flower Wasp
(Order: Hymenoptera)
Eats insects (& nectar)



Preying Mantis
(Order: Mantodea)
Eats insects, spiders



Dragonfly
(Order: Odonata)
Eats flies, mosquitoes



Flower Spider
(Class: Arachnida)
Eats bees, insects



SUPPORTED BY A GRANT FROM THE Adelaide and Mount Lofty Ranges Natural Resources Management Board



MARDEN SENIOR COLLEGE
Your pathway to success